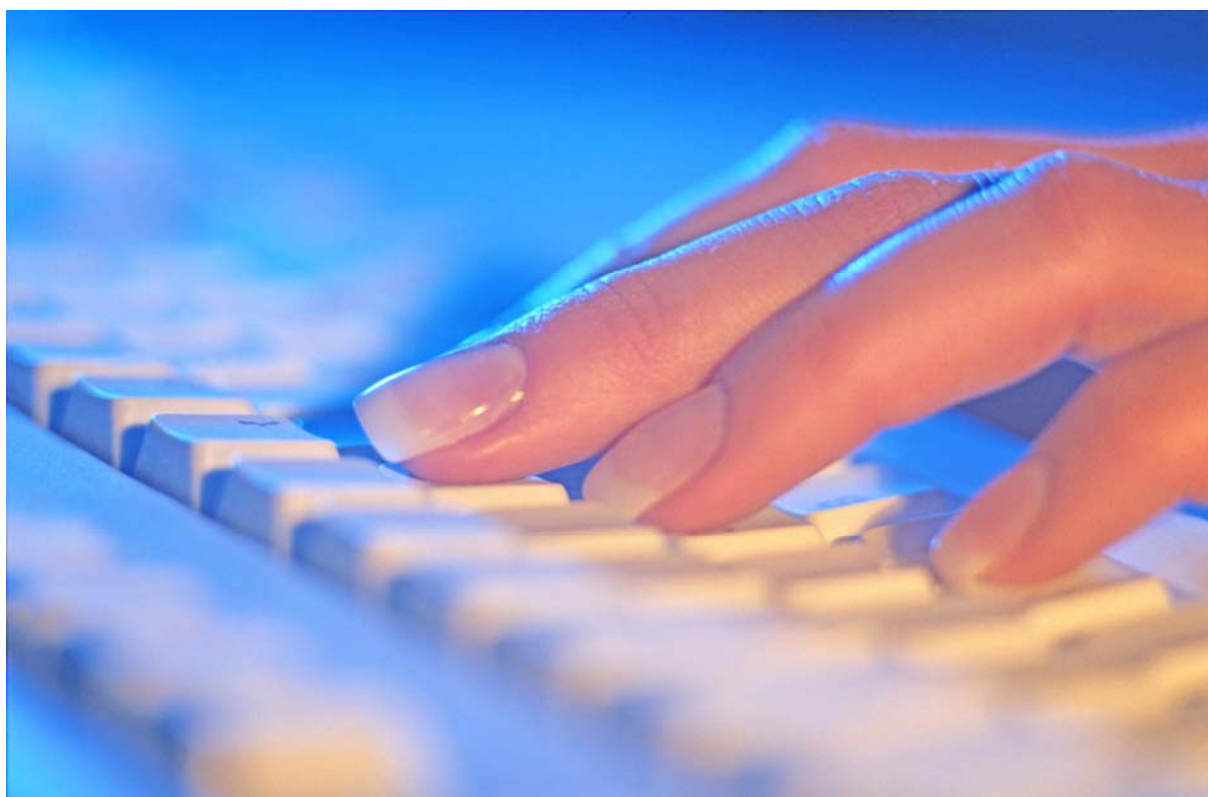




...Ihr Partner für Licht!

ISIS

Keyboardcontrol



STENGER - TECHNIK - Ihr Partner für Licht!

ING. STENGER • ELEKTROTECHNISCHE UND BÜHNENBELEUCHTUNGSGERÄTE GES.M.B.H.

Sebastianplatz 2

A - 1030 Wien

Tel.: +43 / 1 / 7124599 - 0

Fax: +43 / 1 / 7124599 - 10

Mail: office@stenger-technik.com

www.stenger-technik.com

ING. STENGER GES.M.B.H.
Sebastianplatz 2
1030 Wien
Tel: +43/1/7124599-0
Fax: +43/1/7124599-10
office@stenger-technik.com
www.stenger-technik.com

Function Keys: (F1 → F12)

F1: Scrn F2: Scrn F3: Scrn F4: Scrn F5: Scrn F6: Scrn
 F7: Scrn F8: Scrn F9: Mon 1 F10: Out F11: Dim F12: Menu

Function Keys: SHIFT +

F1: Go1 F2: Hold1 F3: Back1 F4: Cut1 F5: Go2 F6: Hold2
 F7: Back2 F8: Cut2 F9: Rec F10: Sum F11: Copy F12: UpDnList

Function Keys: CTRL +

F1: Pile1 F2: BJmp1 F3: Jump1 F4: Seq1 F5: Pile2 F6: BJmp2
 F7: Jump2 F8: Seq2 F9: MCLib F10: Color F11: Loop F12: CtrlList

Function Keys: ALT +

F1: S1 F2: P1 F3: S2 F4: P2 F5: AutG1 F6: AutG2
 F7: Live F8: EdMem F9: Patch F10: SubCf F11: Auto F12: AltList

Using the “QWERTY” Keyboard to access functions:

The other way of controlling the software is from the “qwerty” keyboard. All operations are possible through a series of one letter, two letter abbreviations plus a toggling key (Alt, Ctrl,...) or via the function keys plus eventually a toggling key. Generally, the abbreviations are the first two letters of the command although there are some exceptions to this rule depending on the availability of letters.

Direct access to functions by typing one letter:

FUNCTION	KEY	FUNCTION	KEY
All	A	Bank	B
Chaser No	C	Down Time	D
Effect No	E	FF	F
Group	G	Invert Chan Sel.	I
K1 softkey	K	Last Chan Sel.	L
Memory	M	Next existing item	N
Previous exist. Item	P	Return	R
Special Times screen	S	Up Time	U
Wait Time	W	Prev non exist item	(
Nxt non exist item)	Step fwd (effects)	>
Step bkwd (effects)	<	0	(zero)
0	(00)	Load	Insert
Erase	Delete	Help	?
Wheel Up	PgUp	Wheel Down	PgDn
AT%	%, *	0 → 9	0 → 9
Thru	Tab	Thru On	Shift Tab
+ -	+ -	Pause	;
Color	\$	Dimmer	&
Clear	Spacebar	Stop Record Macro	!

Access to functions by typing </> followed by two letters.

FUNCTION	</> + ..	FUNCTION	</> + ..
CANCEL	Spacebar	SUB 1 to 48	01 (or 1) – 48
A Group	AG	ADd	AD
ALL	AL	Audio-Midi	AM
ASsign	AS	AUto mode	AU
AutoGo 1	A1	Autogo 2	A2
B Group	BG	BAnk	BA
Black-Out	BO	Black-out auX	BX
BYpass	BY	C Group	CG
CHain	CH	Channel Tracking	CT
Clip Board	CB	COngig	CO
Cycle	CY	D Group	DG
DiagnostiC	DC	Direction	DI
DEl (step)	DE	Down Time	DT
Fade	FA	FILL	FI
FLash mode	FL	FLiP	FP
FRee	FR	From Disk	FD
GRab	GR	HOMe	HO
INHibit	IN	InverT selection	IT
IF 0%	IF	K keys X (1,...)	KX
LAst selection	LA	Link	LI
LOck	LO	Mask	MK
Mc Lib	ML	Memory Tracking	MT
MOde (effects)	MO	Mon 1	M1
Mon 2	M2	Next Existing item	NE
Next Non exist. Item	NN	Network	NK
OFF	OF	OPen	OP
OUt screen	OU	PAMeters screen	PA
PausE (effects)	PE	Page + (param.)	P+
Page - (param.)	P-	Part Copy	PC
Part Load	PL	Part Record	PR
Part Sum	PS	Previous exist item	PE
Previous non exist.	PN	PRint	PR
REturn	RE	Remote Control	RC
seQential mode pb1	Q1	seQential mode pb2	Q2
Step Forward	SF	Step Backward	SB
SOlo	SO	Special Times scr.	ST
SYnc mode	SY	Step + (linear)	S+
Step - (linear)	S-	To Disk	TD
TEst	TE	TRackball	TR
TYpe	TY	Unlink	UK
UNselect	UN	Up Time	UT
Wait Time	WT	X only (trackball)	XX
Y only (trackball)	YY	X + Y (trackball)	XY
ZOOM (memory)	ZO		

The values and the virtual faders can be faded up and down by using the PgUp and PgDn keys. To associate the PgUp/PgDn keys to a specific control, press the <Equal> key followed by two letters.

FADER	<Equal> +	FADER	<Equal> +
CANCEL	Spacebar	Submasters 1 → 48	01 (or 1) 48
AuDio	AD	AUditorium	AU
AuXiliary fader	AX	COlor	CO
speed pb1	D1	speed pb2	D2
speed Effects	DE	FLash master	FL
Dmx In master	DI	Grand Master	GM
OVERRIDE	OV	PAram. control	PA
SubMasters master	SM	S1	S1
S2	S2	P1	P1
P2	P2	X (pan)	XX
Y (Tilt)	YY		

Whenever there is a discrepancy in value of the virtual and actual faders, manual control can be regained by moving the actual fader to collect the value of the virtual fader.

Access to ALT functions by typing <, > followed by two letters. The ALT functions are exactly the same as the CTRL functions except that instead of toggling status, it forces the status in a well defined state.

FUNCTION	<, > + ..	STATUS
CANCEL	Spacebar	
Flashes 1 to 48	01 – 48	Flash On
AuDio mode	AD	Forced in Audio mode
ASsign	AS	Assign : default
AUtomode	AU	Forced in Automatic mode
Autogo pb1	A1	Forced in Autogo
Autogo pb2	A2	Forced in Autogo
Black-Out	BO	Forced in Black-Out
Black-out auXiliary	BX	Forced in Black-Out (Aux fader)
BYpass	BY	Forced in Bypass
submasters COntfig	CO	Subm Config : default
DIrection	DI	Direction : Forward (effects)
FAde	FA	Fade : Cut (effects)
FLash mode	FL	Flash mode : Normal
INHibit	IN	Forced in Inhibit
MOde	MO	Mode : Positive (effects)
Override	O-	Override : + 0 %
PausE	PE	Pause : Off (effects)
Parameters page	P-	First page of parameters
Parameters page	P+	Last page of parameters
linear Steps	S-	First Step
linear Steps	S+	Last Step
seQUential mode pb1	Q1	Forced in Sequential mode
seQUential mode pb2	Q2	Forced in Sequential mode
TRackball config	TR	Trackball config : default

Enter the Desired Option Number (XX) OR Trackball (Mouse) + Enter Press <clear> to return to the previous page.

{01 Submasters}	{02 Playbacks}	{03 Masters}	{04 Functions}
{05 Effects}	{06 Motion Ctl}	{07 Manager}	{08 Keyboard}

Title = " HELP - Alphanumeric Keyboard "

1 = " ", user.hlp, Keys_Submasters

2 = " ", user.hlp, Keys_Playbacks

3 = " ", user.hlp, Keys_Masters

4 = " ", user.hlp, Keys_Functions

5 = " ", user.hlp, Keys_Effects

6 = " ", user.hlp, Keys_Motion

7 = " ", user.hlp, Keys_Manager

8 = " ", user.hlp, Keys

NOTES:

ING. STENGER GES.M.B.H.
Sebastianplatz 2
1030 Wien
Tel: +43/1/7124599-0
Fax: +43/1/7124599-10
office@stenger-technik.com
www.stenger-technik.com

